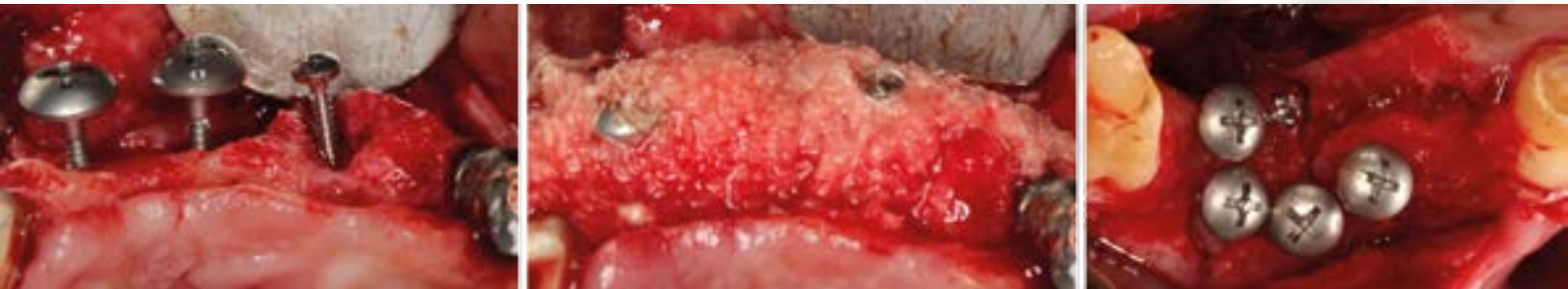


# Umbrella Technique

by Dr. Dr. Schlee

[www.ustomed.de](http://www.ustomed.de)



Innovations made by USTOMED

## **Umbrella Technique:**

Simple and easy Augmentation Method



Competence in Instruments  
MADE IN GERMANY

Skilled and experienced surgical  
mechanics create top-quality instruments

# MADE BY HAND

Technical Competence  
with a long Family Tradition

Using selected raw materials and highly advanced machinery

# FOR USE BY HAND

Quality that you can see and feel

Many different instruments developed in close collaboration with  
internationally renowned universities and opinion leaders



Member of the German Dental  
Manufacturers (VDDI)



Certified by DQS according to:  
DIN EN ISO 13485  
DIN EN ISO 9001  
93/42/EWG Appendix II



Competence in Instruments  
**MADE IN GERMANY**

# 01 Testimonials

Ustomed is a company with very lean structures and hierarchies and therefore

## INNOVATIONS CAN BE REALIZED

straight forward and reliably.

Dr. Dr. Markus Schlee



## Dr. Dr. Markus Schlee

Periodontologist and implant dentist

Fields of concentration: Implant dentistry (DGI), Periodontology (DGP, EDA, EFP)

Lecturer at Steinbeis University Berlin and the Academy of Dentistry and Oral Medicine (APW)

Member of the German Association of Esthetic Dentistry (DGÄZ)

Member of ECDI (European Centers for Dental Implantology)

- DGZMK Postgraduate Education Seal for 2009

- DGP-specialist of periodontology 2006 - 2018



**International Member**  
American Academy of Periodontology



# 02 Umbrella- Technique-Set

The basis of successful augmentation of bone is the generation of immobile space, the stabilization of the coagulum and the sustainable closure of soft tissues. Further factors for success beside general health are first of all the surgical time and gentle and precise surgical techniques.

The generation of volume can be achieved by various approaches (bone blocks, meshes, stable membranes or foils). Conventional tenting by micro osteosynthesis screws, described in the literature as tent pole technique, has the disadvantage that parallel to the shrinkage of the bone substitute the small heads of the screws may penetrate the soft tissue. Therefore they are rather inappropriate to stabilize bigger volumes of augmentation. To solve this problems the UMBRELLA screws have been developed.

The flat head of the screws have a diameter of 5 mm. They suitable to tent the buccal contour of a alveola and to protect augmented areas from pressure from lip, tongue and cheek. Fabricated in surgical steel the diameter of the screw can be reduced to 1 mm and do not osseointegrate like titanium screws. In relation to bone blocks, meshes or foils which also need to be fixed by nails or screws UMBRELLA screws reduce the costs. Exposure is a major problem in conventional augmentation techniques causing at least partial loss of the augmented volume. In case of exposure the UMBRELLA screw just needs to be removed. The little defect will heal spontaneously by granulation. Even unexperienced surgeons will be able to handle this technique.

Advantages: : cheap, fast, easy surgery uncomplicated management of complications

## Innovative Geometry of the Screws

- Precision-milled, cross-recessed screw head
- Patented, self-adaptive screwdriver bit
- Superior friction between the blade and the screw head – no socket rounding
- 5mm diameter screw head



Picture: Dr. Dr. Markus Schlee

## Box

- Sophisticated and functional storage box made of a novel, hardwearing plastic material invented in the aerospace sector
- Clearly structured design
- Removable ruler for exact measurement of screw length and augmentate
- For all established thermodesinfection and autoclaving procedures
- thus complying with the latest guidelines of the Robert Koch-Institute/Germany



# 03 Screws

## Screws made from a new-type **Implant Steel Alloy**

- Diameter: 1,2 mm
- Lengths: 8 mm/11 mm/13 mm
- Screw Head Diameter: 5 mm
- no osseointegration



highly enlarged illustrations

## Order Form

Order Number	Description	Quantity
<b>68-780-014</b>	<b>Umbrella-Technique-Set, consisting of:</b>	[ ]
68-720-010	Box for Umbrella Micro-Screws Ø 1,2 mm	[ ]
68-740-002	Screwdriver, 11 cm	[ ]
68-760-102	Selfretaining Blade, cross, 60 mm	[ ]
-	3x Umbrella Implant-Steel-Screws 1 x 8mm / 11mm / 13mm	
-	1x Pilot Drill Ø 1,0mm	
<b>Umbrella Implant Steel Alloy</b>		
68-112-208 S	SCHLEE, Umbrella-Screw, Kreuz, Ø 1, 2 mm, 8 mm Implant Steel Alloy	[ ]
68-112-211 S	SCHLEE, Umbrella-Screw, Kreuz, Ø 1, 2 mm, 11 mm Implant Steel Alloy	[ ]
68-112-213 S	SCHLEE, Umbrella-Screw, Kreuz, Ø 1,2 mm, 13 mm Implant Steel Alloy	[ ]

# 04 Application

## Example for application

The pictures are provided with kind permission of Dr. Dr. Markus Schlee





USTOMED INSTRUMENTE  
Ulrich Storz GmbH & Co. KG

Bischof-Sproll-Straße 2  
78532 Tuttlingen / Germany

Hersteller von Chirurgie- und  
Dentalinstrumenten

Phone: +49 (0) 74 61 / 9 65 85 0  
Fax: +49 (0) 74 61 / 9 65 85 65

Manufacturer of Surgical and  
Dental Instruments

[info@ustomed.de](mailto:info@ustomed.de)  
[www.ustomed.de](http://www.ustomed.de)

Alle Preise zuzüglich MwSt. und Versandkosten. Preis- und techn. Änderungen vorbehalten.