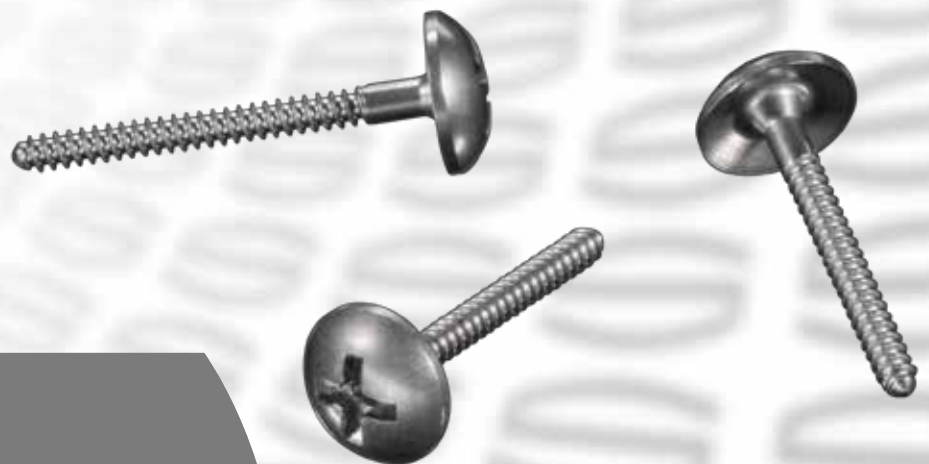


Umbrella Technique

by Dr. Dr. Schlee

www.ustomed.de



Innovations made by USTOMED

Umbrella Technique:
Simple and easy Augmentation Method



Competence in Instruments
MADE IN GERMANY

Skilled and experienced surgical
mechanics create top-quality instruments

MADE BY HAND

Technical Competence
with a long Family Tradition

Using selected raw materials and highly advanced machinery

FOR USE BY HAND

Quality that you can see and feel

Many different instruments developed in close collaboration with
internationally renowned universities and opinion leaders



Member of the German Dental
Manufacturers (VDDI)



Certified by DQS according to:
DIN EN ISO 13485
MDSAP
93/42/EWG Appendix II



Competence in Instruments
MADE IN GERMANY

01 Testimonials

Ustomed is a company with very lean structures and hierarchies and therefore

INNOVATIONS CAN BE REALIZED

straight forward and reliably.

Dr. Dr. Markus Schlee



Dr. Dr. Markus Schlee

Periodontologist and implant dentist

Fields of concentration: Implant dentistry (DGI), Periodontology (DGP, EDA, EFP)

Lecturer at Steinbeis University Berlin and the Academy of Dentistry and Oral Medicine (APW)

Member of the German Association of Esthetic Dentistry (DGÄZ)

Member of ECDI (European Centers for Dental Implantology)

- DGZMK Postgraduate Education Seal for 2009

- DGP-specialist of periodontology 2006 - 2018



International Member
American Academy of Periodontology



02 Umbrella- Technique-Set

The basis of successful augmentation of bone is the generation of immobile space, the stabilization of the coagulum and the sustainable closure of soft tissues. Further factors for success beside general health are first of all the surgical time and gentle and precise surgical techniques.

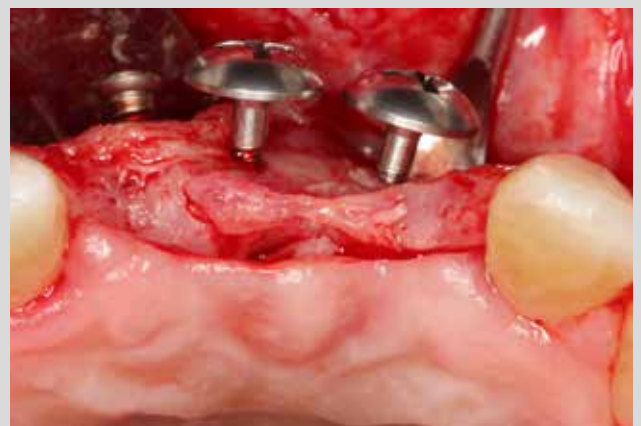
The generation of volume can be achieved by various approaches (bone blocks, meshes, stable membranes or foils). Conventional tenting by micro osteosynthesis screws, described in the literature as tent pole technique, has the disadvantage that parallel to the shrinkage of the bone substitute the small heads of the screws may penetrate the soft tissue. Therefore they are rather inappropriate to stabilize bigger volumes of augmentation. To solve this problems the UMBRELLA screws have been developed.

The flat head of the screws have a diameter of 5 mm. They suitable to tent the buccal contour of a alveola and to protect augmented areas from pressure from lip, tongue and cheek. Fabricated in surgical steel the diameter of the screw can be reduced to 1 mm and do not osseointegrate like titanium screws. In relation to bone blocks, meshes or foils which also need to be fixed by nails or screws UMBRELLA screws reduce the costs. Exposure is a major problem in conventional augmentation techniques causing at least partial loss of the augmented volume. In case of exposure the UMBRELLA screw just needs to be removed. The little defect will heal spontaneously by granulation. Even unexperienced surgeons will be able to handle this technique.

Advantages: : cheap, fast, easy surgery uncomplicated management of complications

Innovative Geometry of the Screws

- Precision-milled, cross-recessed screw head
- Patented, self-adaptive screwdriver bit
- Superior friction between the blade and the screw head - no socket rounding
- 5mm diameter screw head



Picture: Dr. Dr. Markus Schlee

Box

- Sophisticated and functional storage box made of a novel, hardwearing plastic material invented in the aerospace sector
- Clearly structured design
- Removable ruler for exact measurement of screw length and augmentate
- For all established thermodesinfection and autoclaving procedures
- thus complying with the latest guidelines of the Robert Koch-Institute/Germany



03 Screws

Screws made from a new-type Implant Steel Alloy

- Diameter: 1,2 mm
- Lengths: 8 mm / 11 mm / 13 mm
- Screw Head Diameter: 5 mm
- no osseointegration



highly enlarged illustrations

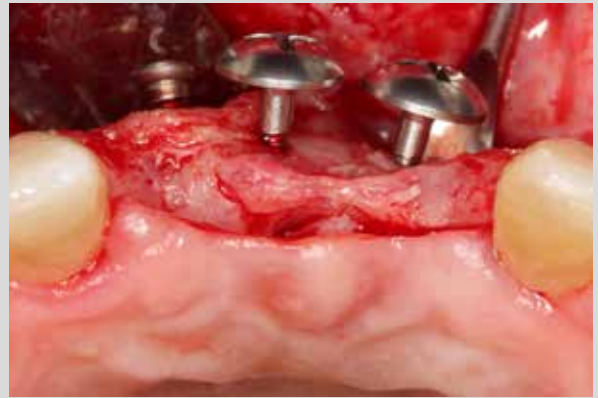
Order Form

Order Number	Description	Quantity
68-780-014	Umbrella-Technique-Set, consisting of:	[]
68-720-010	Box for Umbrella Micro-Screws Ø 1,2 mm	[]
68-740-002	Screwdriver, 11 cm	[]
68-760-102	Selfretaining Blade, cross, 60 mm	[]
-	2x Umbrella Implant-Steel-Screws each size: 2 x 8mm / 11mm / 13mm	[]
-	1x Pilot Drill Ø 1,0 mm	[]
Umbrella Implant Steel Alloy		
68-112-208 S	SCHLEE, Umbrella-Screw, Kreuz, Ø 1, 2 mm, 8 mm Implant Steel Alloy	[]
68-112-211 S	SCHLEE, Umbrella-Screw, Kreuz, Ø 1, 2 mm, 11 mm Implant Steel Alloy	[]
68-112-213 S	SCHLEE, Umbrella-Screw, Kreuz, Ø 1, 2 mm, 13 mm Implant Steel Alloy	[]

04 Application

Example for application

The pictures are provided with kind permission of Dr. Dr. Markus Schlee





USTOMED INSTRUMENTE
Ulrich Storz GmbH & Co. KG
Hersteller von Chirurgie- und
Dentalinstrumenten
78532 Tuttlingen / Germany

Bischof-Sproll-Straße 2
Phone: + 49 (0) 74 61 / 9 65 85 0
Fax: + 49 (0) 74 61 / 9 65 85 65

Manufacturer of Surgical and
Dental Instruments

info@ustomed.de
www.ustomed.de

Alle Preise zuzüglich MwSt. und Versandkosten. Preis- und techn. Änderungen vorbehalten.